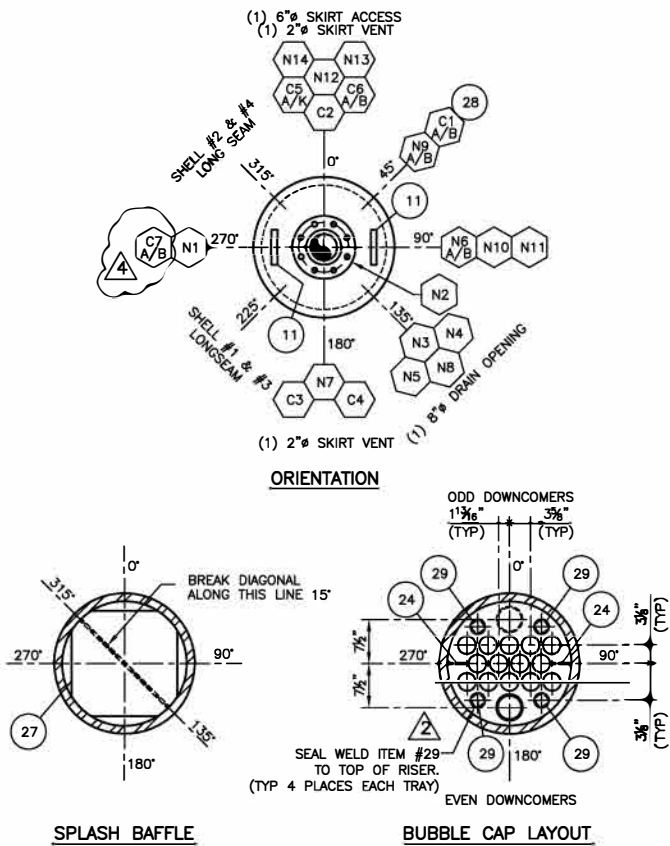


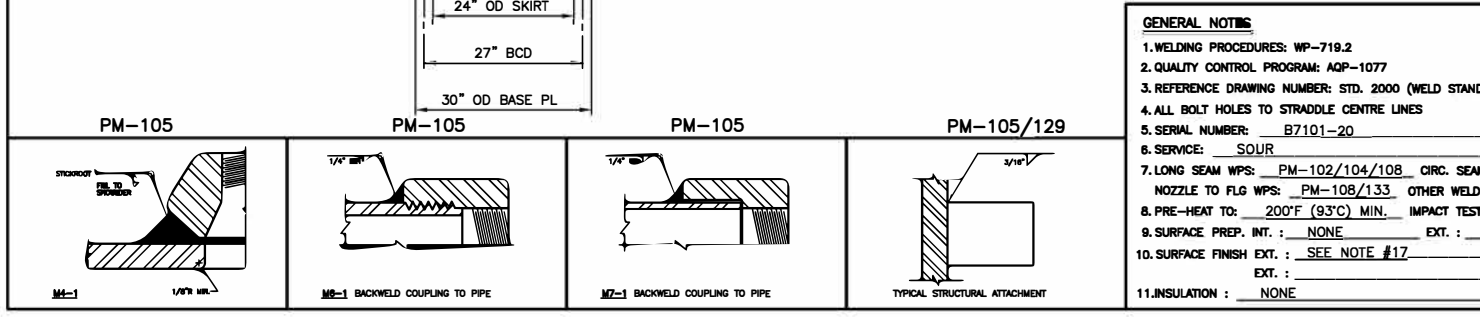
N13	PSV-400	1 1/2" 900# SCH XXH RFWN FLG	1	SA-105N	L1-1
		1 1/2" SCH XXH SMLS PIPE x 5 7/8" LG	1	SA-106B	J1-2
N14	INSPECTION	3" 900# RFLWN FLG x 10 1/2" LG	1	SA-105N	J2-1
		3" 900# RF BLIND FLG	1	SA-105N	
		3" 900# RF x 1/8" THK GASKET	1	NOTE #13	
		7/8" x 5 3/4" LG STUDS c/w (2) NUTS EACH	8	NOTE #12	
C1	GLYCOL COIL	1" 6000# NPT FULL CPLG	2	SA-105N	M1-2
		1" SCH 160 SMLS PIPE x 30'-0" LG	1	SA-106B	M6-1
		1" 6000# 90° SW ELL	2	SA-105N	M7-1
C2	REFLUX COIL	1" 6000# NPT FULL CPLG	1	SA-105N	M1-2
		1" SCH 160 SMLS PIPE x 30'-0" LG	1	SA-106B	M6-1
		1" 6000# 90° SW ELL	1	SA-105N	M7-1
C3	GLYCOL OUT	1 1/2" 6000# NPT FULL CPLG	1	SA-105N	M1-2
C4	EQUALIZER VENT	1 1/2" 6000# NPT FULL CPLG	1	SA-105N	M1-2
C5	TRAY DRAIN	2" 900# SCH 160 RFWN FLG	10	SA-105N	L1-1
		2" SCH 160 WOL	10	SA-105N	M4-1
		2" 900# RF BLIND FLG	10	SA-105N	
		2" 900# RF x 1/8" THK GASKET	10	NOTE #13	
		7/8" x 5 3/4" LG BOLTS c/w (2) NUTS EACH	80	NOTE #16	
C6	SPARE	1 1/2" 6000# NPT TOL	2	SA-105N	M4-1
		1 1/2" NPT HEX PLUG	2	SA-105N	
C7	X-RAY PORT	1" 6000# NPT TOL	2	SA-105N	M4-1
		1" NPT HEX PLUG	2	SA-105N	

BILL OF MATERIALS					
MARK	PART	DESCRIPTION	QTY	MATERIAL	WELD SYM
1	HEADS	24" OD x 1 3/8" NOM. THK x 2:1 SE HEAD	2	SA-51670N	K2-2
		c/w 2" SF (HOT FORMED)			
3	SHELL #1	24" OD x 1 3/8" PL x 10'-0" LG	1	SA-51670N	K2-1/K2-2
4	SHELLS #2 & #3	24" OD x 1 3/8" PL x 8'-0" LG	2	SA-51670N	K2-1/K2-2
5	SHELL #4	24" OD x 1 3/8" PL x 7'-0" LG	1	SA-51670N	K2-1/K2-2
6	SKIRT	24" OD x 1 1/2" PL x 1'-7 7/8" LG	1	SA-51670N	K2-1/K2-2
7	BASE PLATE	30" OD x 1" PL x 21" ID	1	SAG40.2144W	
8	BREAK FLANGE	24" 900# RTJ FLG w/ 21.25" BORE	2	SA-105N	L1-1
9	GASKET	R78 OVAL RING GASKET	1	304 SS	
10	BOLTING	2 1/2" x 18" LG BOLTS c/w (2) NUTS EACH	20	NOTE #12	
11	LIFT LUGS	6" x 1" PL x 8" LG c/w (1) 1 1/2" HOLE	2	SA-51670N	
12	INLET DEFLECTOR	8" x 8" x 4" x 3/8" PL (FAB BOX, TILT 15° DWN)	1	SAG40.2144W	
13	CHIMNEY CAP	10" OD x 3/8" PL	1	SAG40.2144W	
14	CAP SUPPORT	1" x 3/8" PL x 6" LG	2	SAG40.2144W	
15	CHIMNEY	8" SCH STD PIPE x 1'-11 7/8" LG	1	SA-106B	
16	TRAYS #1-10	21 1/8" OD x 3/8" PL	10	SA240TP304	
17	DOWNCOMER #1	4" SCH STD PIPE x 3'-6" LG	1	SA312TP304	
18	DNCOMER #2-10	4" SCH STD PIPE x 2'-1" LG	9	SA312TP304	
19	MIST PAD	21" OD x 6" THK x 12" DENSITY MIXTEX	2	316 SS	
20	M.P. SUPPORT	21 1/8" OD x 3/8" PL x 18 7/8" ID	4	SAG40.2144W	
21	M.P. SUPPORT	21 1/8" OD x 4" XPM	4	CS	
22	BUBBLE CAP	3" OD x 3" LG STD BUBBLE CAP	180	SS	
23	RISERS	2" TUBING x 2 5/8" LG	180	SS	
24	DEFLECTORS	2" x 3/8" PL x 3 1/4" LG	20	SAG40.2144W	
25	CHIMNEY TRAY	20 5/8" OD x 3/8" PL	1	SAG40.2144W	
26	TRAY SUPPORT	2" x 1/4" PL x 5'-8" LG (ROLL TO 21 1/8" OD)	1	SAG40.2144W	
27	SPLASH BAFFLE	18" SQ PL x 3/8" PL (BREAK DOWN ALONG DIAG. 15°)	1	SAG40.2144W	
28	NAME PLATE	STANDARD NAME PLATE c/w "T" BRACKET	1	SAG40.2150W	
29	RISER PLUG	2 1/2" OD x 3/8" PL	40	SAG40.2144W	
N1	INLET	4" 900# SCH XXH RFWN FLG	1	SA-105N	L1-1
		4" SCH XXH SMLS PIPE x 1'-4 7/8" LG	1	SA-106B	J3-2
	REPAD	9" OD x 1 1/4" PL x 4 5/8" ID (ROLL TO 24" ID)	1	SA-51670	J3-2
N2	GAS OUTLET/INSP.	4" 900# RFLWN FLG x 9" LG	1	SA-105N	SEE N2
N3	DRAIN	2" 900# SCH 160 RFWN FLG	1	SA-105N	L1-1
		2" SCH 160 SMLS PIPE x 1'-0 1/4" LG	1	SA-106B	L1-1
		2" SCH 160 90° LR BW ELL	1	SA-234WPB	L1-1
		2" SCH 160 SMLS PIPE x 7 3/4" LG	1	SA-106B	J1-1
N4	LIQUID OUTLET	2" 900# SCH 160 RFWN FLG	1	SA-105N	L1-1
		2" SCH 160 SMLS PIPE x 1'-0 1/4" LG	1	SA-106B	J2-1
		2" SCH 160 90° LR BW ELL	1	SA-234WPB	L1-1
		2" SCH 160 SMLS PIPE x 8 1/4" LG	1	SA-106B	L1-1
N5	LC-400	4" 900# RFLWN FLG x 10 5/8" LG	1	SA-105N	J2-1
N6	LG-400	2" 900# SCH 160 RFWN FLG	2	SA-105N	L1-1
		2" SCH 160 SMLS PIPE x 5 1/8" LG	2	SA-106B	J1-2
N7	FUTURE HC OUTLET	2" 900# SCH 160 RFWN FLG	1	SA-105N	L1-1
		2" SCH 160 SMLS PIPE x 5 1/8" LG	1	SA-106B	J1-2
		2" 900# RF BLIND FLG	1	SA-105N	
		2" 900# RF x 1/8" THK GASKET	1	NOTE #13	
		7/8" x 5 3/4" LG BOLTS c/w (2) NUTS EACH	8	NOTE #12	
N8	FUTURE LC	4" 900# RFLWN FLG x 10 5/8" LG	1	SA-105N	J2-1
		4" 900# RF BLIND FLG	1	SA-105N	
		4" 900# RF x 1/8" THK GASKET	1	NOTE #13	
		1 1/8" x 6 3/4" LG BOLTS c/w (2) NUTS EACH	8	NOTE #12	
N9	FUTURE LG	2" 900# SCH 160 RFWN FLG	2	SA-105N	L1-1
		2" SCH 160 SMLS PIPE x 5 1/8" LG	2	SA-106B	J1-2
		2" 900# RF BLIND FLG	2	SA-105N	
		2" 900# RF x 1/8" THK GASKET	2	NOTE #13	
		7/8" x 5 3/4" LG BOLTS c/w (2) NUTS EACH	16	NOTE #12	
N10	TI-400	2" 900# SCH 160 RFWN FLG	1	SA-105N	L1-1
		2" SCH 160 SMLS PIPE x 5 1/8" LG	1	SA-106B	J1-2
N11	PI-400	2" 900# SCH 160 RFWN FLG	1	SA-105N	L1-1
		2" SCH 160 SMLS PIPE x 5 1/8" LG	1	SA-106B	J1-2
N12	LSHH-400	4" 900# RFLWN FLG x 10 5/8" LG	1	SA-105N	J2-1
4	ADDED C7		TBB		04/09/09
3	C6 WAS 1" 6000# TOL & HEX PLUG		LM		04/09/03
2	ADDED RISER PLUGS		RA		04/08/30
1	C5 WAS 3/4" 6000# TOL		EB		04/08/23
0	ISSUED FOR CONSTRUCTION		AB		04/08/04
A	ISSUED FOR APPROVAL		RA		04/07/26
NO.	REVISION	BY	CHECKED	DATE	



**NOTES**

- ALL BOLTING TO BE SPEC SA-193-B7M AND SA-194-2HM MATERIAL.
- GASKETS TO BE SPIRAL WOUND 304 SS MATERIAL WITH FLEXIBLE GRAPHITE FILLER AND CARBON STEEL CENTERING RING (GREY STRIPE).
- COIL TO CONSIST OF (6) TURNS OF 1" SCH 160 SMLS PIPE @ 1 1/2" C/C. DRAWN OVER A 16" MANDREL (SHOP SUPPORT).
- SANDBLASTING SHALL NOT BE CONDUCTED ON SURFACES THAT ARE LESS THAN 3'F ABOVE DEWPOINT OR WHEN THE RELATIVE HUMIDITY OF THE AIR IS GREATER THAN 80 PERCENT.
- VESSEL EXTERIOR TO BE SANDBLASTED PER SSPC-SP6.
- EXTERNAL SURFACES TO RECEIVE (1) COAT CLOVERDALE 71309 INDUSTRIAL METAL PRIMER GREY & (1) COAT CLOVERDALE 74 INDUSTRIAL OR 111 MARINE ENAMEL WARM GREY.
- ALL PRESSURE RETAINING MATERIAL NOT TO EXCEED HARDNESS OF BHN 200.
- SHELLS AND HEADS ARE IMPACT TEST EXEMPT PER UCS-66(a)(b). ALL OTHER COMPONENTS EXEMPT PER UCS-66(a)(b)(c).
- ALL HIC TESTS TO BE DONE IN ACCORDANCE WITH SERIES A(CLR<=15%).



# Presson

ENERFLEX

CUSTOMER

CUSTOMER REF. NO.

JOB NO.

PROJECT

GLYCOL CONTACTOR (V-400)

TITLE

24" OD x 35'-0 1/2" S/S x 2120 PSIG @ 130°F

610 mm OD x 10681 mm S/S x 14617 kPag @ 54°C

DRAWN RA

CHECKED

APPROVED

SCALE 3/4"=1'-0"

DATE 04/07/26

DRAWING NUMBER

SHT. 1 OF 1